

LBRIS

We know
books
Estera Ținteșan

Învățăm să scriem cifre

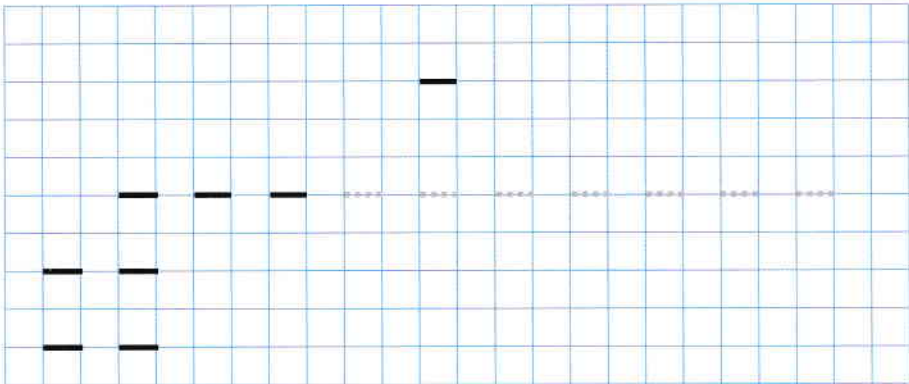
Sugestii pentru

Jocuri și activități alese (ALA)



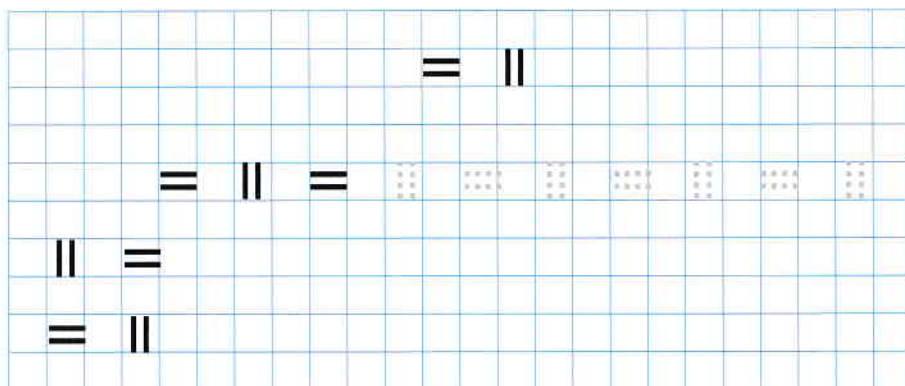
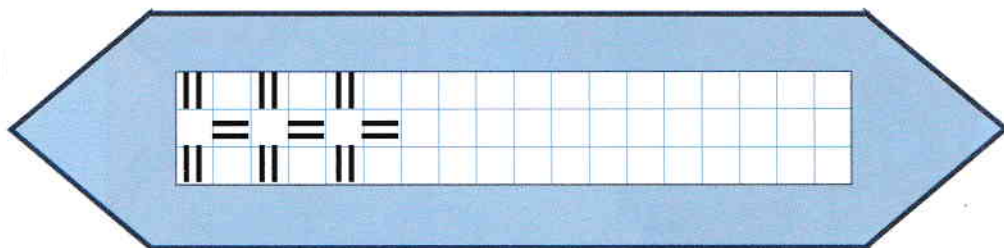
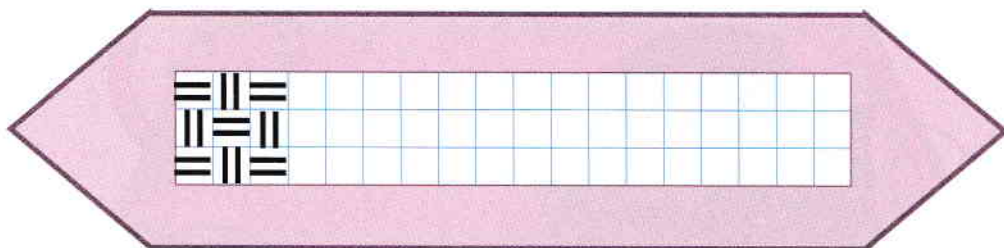
EDITURA ROXEL CART

LINIA ORIZONTALĂ



COMBINAȚII DE LINII DUBLE ORIZONTALE ȘI VERTICALE

- Semnul de carte -



LBRIS

We know
books
Estera Ținteșan

Pregătim mâna pentru scris

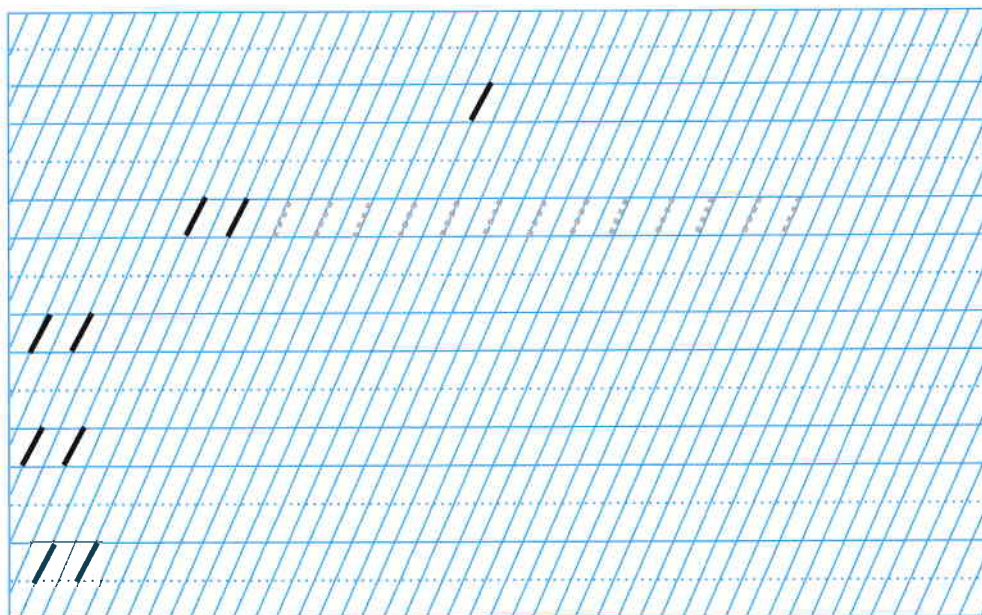
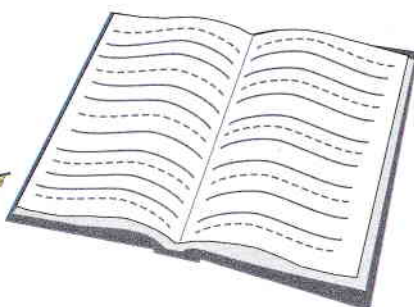
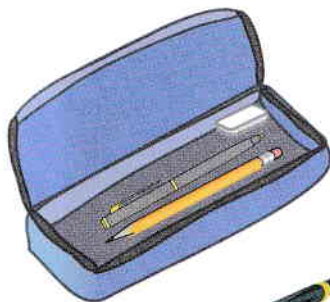
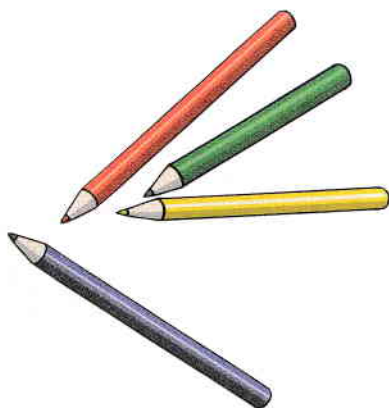
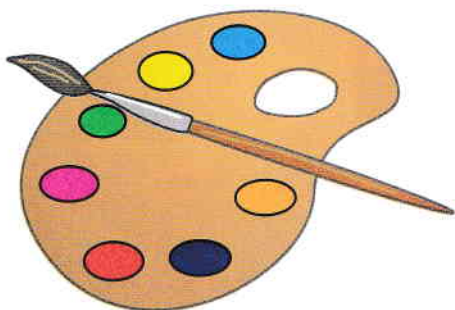
Sugestii pentru

Jocuri și activități alese (ALA)



EDITURA ROXEL CART

LINIUȚE SIMPLE DISTANȚATE



LIBRIS

We know
books

LINIUȚE SIMPLE NEDISTANȚATE



A large rectangular area with a blue grid pattern, intended for writing. The grid consists of solid blue lines forming a grid, with a dashed blue line running horizontally through the middle of each row. There are several short, thick black lines drawn on the grid, including a single vertical line near the top center, a group of four slanted lines on the left side, and several pairs of parallel slanted lines on the left side.

DOUĂ LINIUȚE, PUNCT



Handwriting practice sheet with blue horizontal lines and diagonal blue lines. The sheet contains several rows of tracing exercises:

- Row 1: A single double slash followed by a period (//.).
- Row 2: A sequence of double slashes followed by a period, then a series of dots (// //).
- Row 3: A double slash followed by a period, then another double slash followed by a period (// . // .).
- Row 4: A double slash followed by a period, then another double slash followed by a period (// . // .).
- Row 5: A double slash followed by a period, then another double slash followed by a period (// . // .).